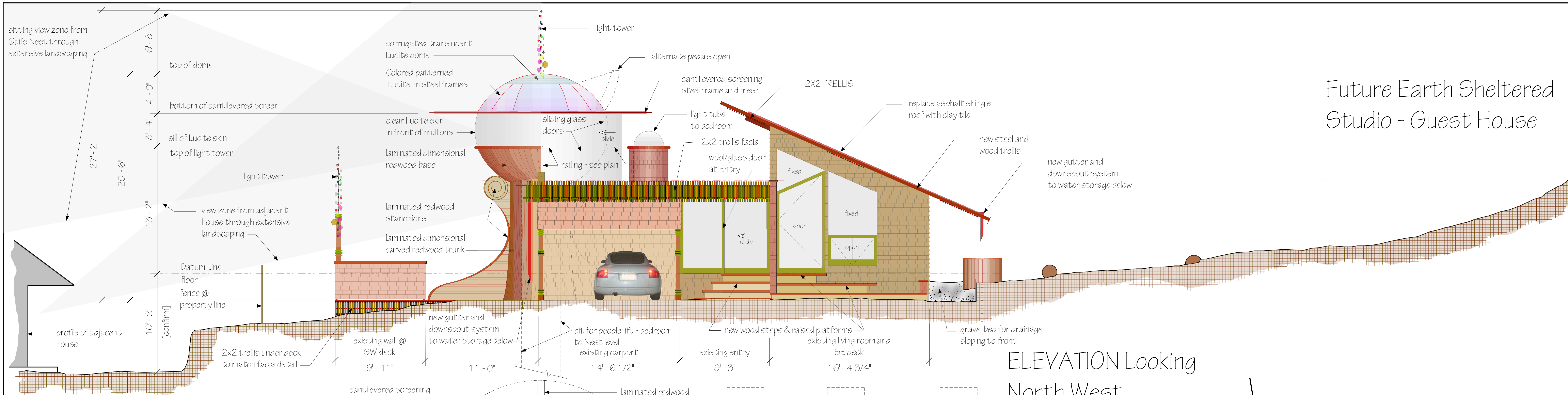


Future Earth Sheltered Studio - Guest House



VIEW

From deck in Gail's Nest to the ocean one mile away. A modest amount of pruning will open the view toward both ocean and sunset.

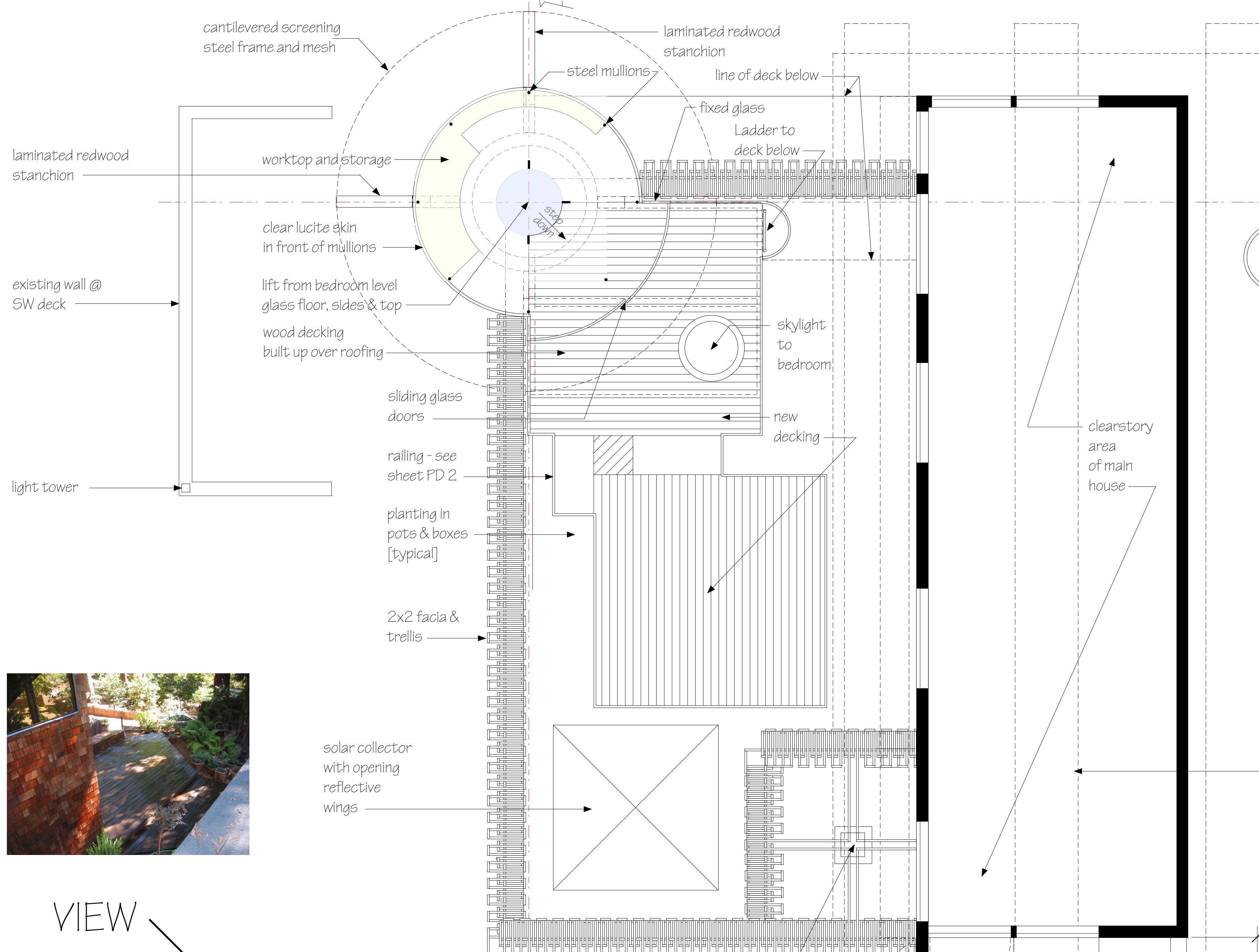
Because of the density of trees and the slope of the land to the SW and south, The Nest will not be easily visible from either the neighboring lot nor the street.

Because of orientation and tree cluster, the Nest will get on and off direct sunlight from early morning until late afternoon. High summer sun will be screened by the cantilevered steel and mesh screening around the dome. Low winter and morning light will come in.

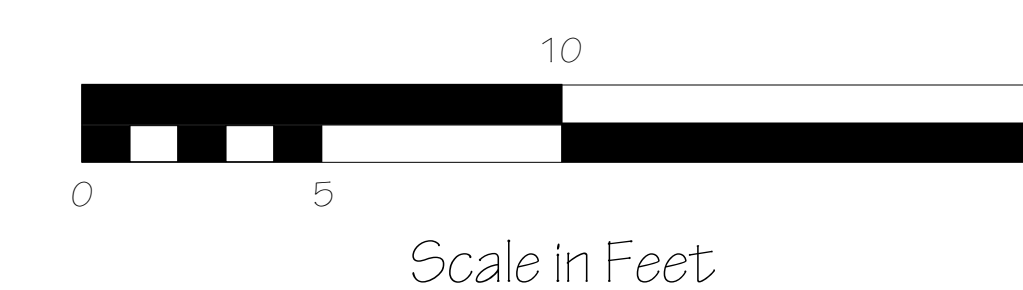


VIEW

From deck to existing front decking below. The enclosure created by the existing house, decking and redwood tree cluster combined with the slope of the terrain, makes a strong space of both prospect and refuge.



FLOOR PLAN @ Nest Deck Level



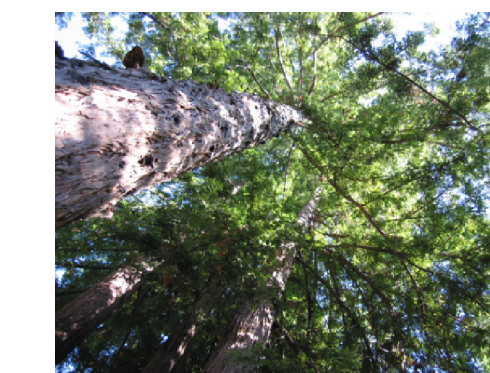
References:

This drawing supplements web site materials on:
http://www.matttaylor.com/public/gails_elsewhere_nest.htm
http://www.matttaylor.com/public/gails_next_2.htm
http://www.matttaylor.com/public/mt_hand_n_book_p_9_11_3a.htm#312
http://www.matttaylor.com/public/postUserian_index.htm
http://www.matttaylor.com/public/bay_area_studio.html
http://www.matttaylor.com/public/bay_area_style.htm



VIEW

From the existing back of the lot. The Nest will fit on the right hand corner of the Bedroom wing. The large redwood in background is the one in the view below. The shot is taken just about at the real property line.



VIEW

Of redwood tree cluster at the front deck which is diagrammed on the floor plan. This cluster protect the house from the front street which is also over 12 feet lower than the first floor line.



VIEW

From the south by southwest. The original roof was shingle with no overhang. This caused water problems. The new roof will be tile with an extended trellis and a water capture system that protects the house and preserves water.



VIEW

From the front redwood tree cluster with back to the front road [taken about half way to the road]. The roof of the existing house will be extended with the trellis and a new a entry created where the open porch is now. The driveway falls abruptly behind where this picture was taken, therefore, the leading edge of the carport roof trellis will mask most of the Nest from the road. The extension of the living room wall will protect the new door to the front deck platform.

Notes:

The Nest is to be built with minimum disturbance to the site. It will be pre-fabricated off site and erected in sections on new foundations. As part of the project, the entire existing structure will be brought up to modern earth quake code standards. In addition, the Bathroom and Kitchen areas will be redone - see Sheet PD - 2.

The Lift from the existing Bedroom to the Nest will be an electrical custom design and built unit - see PD - 3.

As part of the project, grading, water runoff and storage improvements will be made to the site - see Sheet PD - 4. This work will include grading to flow water around the existing and new buildings, two storage tanks to receive roof water. This water will be used for fire safety and landscape watering. This work will also include site preparation work for a future earth-sheltered Studio-Guest House uphill from the existing structure.

Scope of work will also include energy upgrades to provide more sustainable systems - see Sheet PD-5.

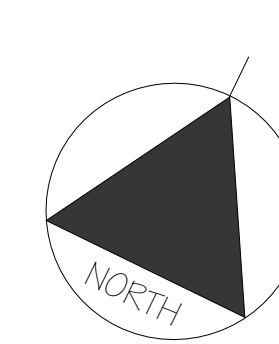
The expected construction period is the summer of 2006.

Gail's Nest is step one in a three step project that will take approximately three years to complete. The goal of this work is to expand the existing structures to provide residence, work areas and guest facilities for Gail and Matt Taylor.

April 19, 2005
 April 21, 2005
 April 22, 2005
 April 24, 2005
 April 28, 2005
 May 07, 2005
 May 25, 2005
 May 28, 2005
 May 28, 2005

revised:

design: Matt Taylor
 date: 20 March 05
 Sheet: PD 1



printed: May 30, 2005

Gail's Nest @ Elsewhere
 PRELIMINARY DESIGN
 Taylor Architecture a division of MG Taylor Corporation
 WITH SFA Architects Master Builders